

# HTTP parameter configuration instructions

Preparation:

1. Reader/writer and adapter power supply;
2. Serial cable or RJ45 network cable;
3. Computer and supporting demo software;
4. Available interface addresses.

HTTP Example:

```
POST /reader/tag.txt HTTP/1.1
```

```
Host:192.168.1.7
```

```
Content-Type: application/json
```

```
Accept: */*
```

```
Content-Length:326
```

```
Connection: Keep-Alive
```

```
{ "Version": "V1.2", "ReaderSN": "2530000000", "TagNum": 5,
  "Tag": [ { "ID": "E28068940000400583D23094", "RSSI": -62, "ANT": 1 },
           { "ID": "000033445566778899001122", "RSSI": -71, "ANT": 1 },
           { "ID": "112200005566778899774422", "RSSI": -67, "ANT": 1 },
           { "ID": "E62249191210015722909938", "RSSI": -57, "ANT": 1 },
           { "ID": "880012D6871D7074EC070809", "RSSI": -74, "ANT": 1 } ] }
```

Version      information

ReaderSN    reader number 2530000000 The last four digits 0000 are the  
device number

TagNum      tag quantity

Tag

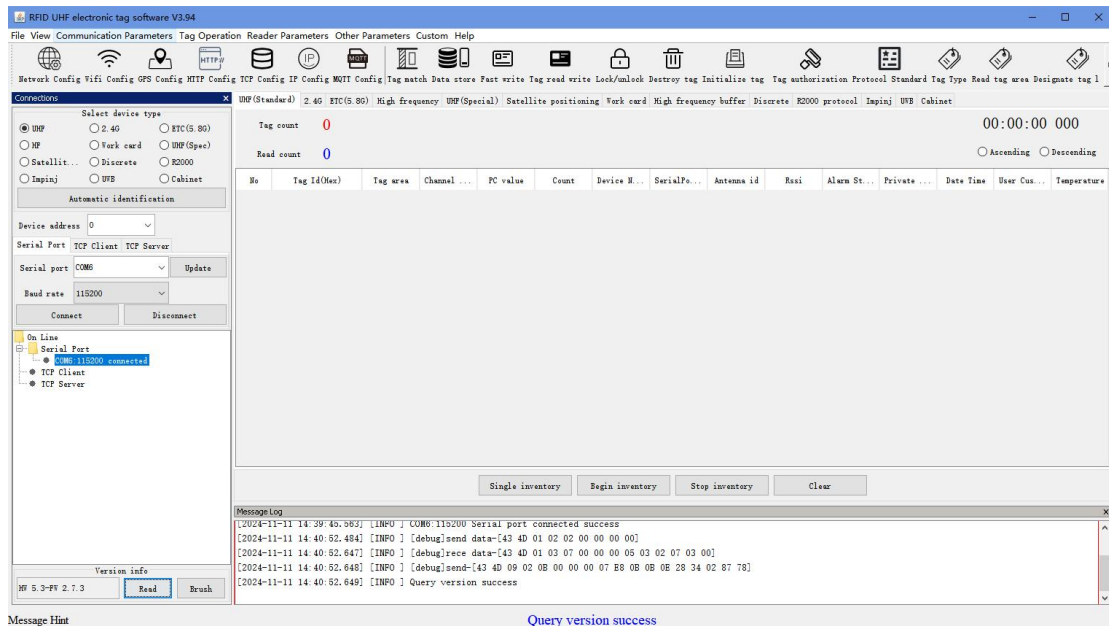
ID      Tag ID

RSSI      rssi value

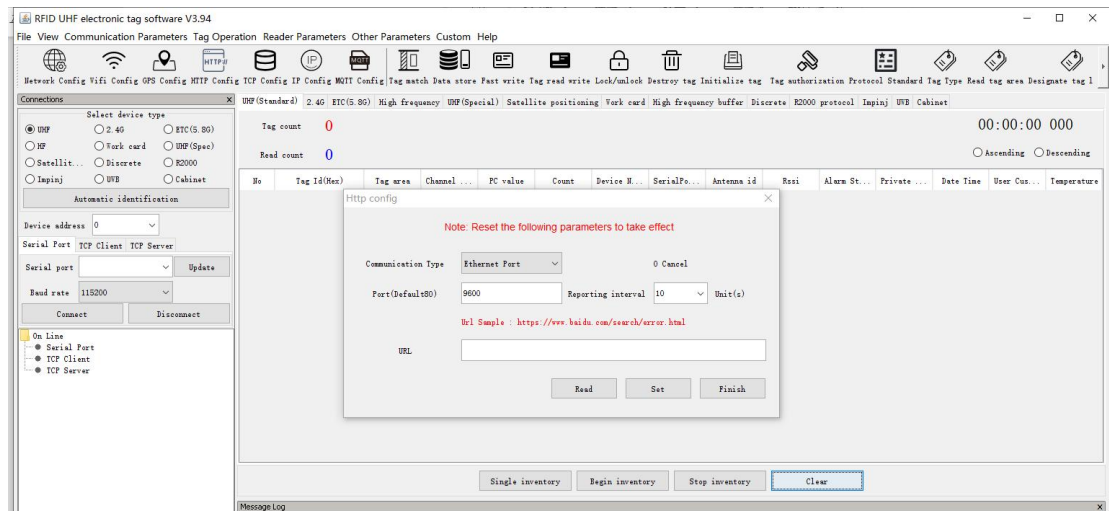
ANT            Antenna Number

# 1. HTTP parameter configuration

1. Connect the reader device to a power source and use a serial cable or network cable to connect the computer and the device.
  2. Open the reader demo and connect the reader using the serial port or network port.
- The connection method is described in the demo operation instructions or the reader instructions.



3. When the list shown in the figure appears and the version number can be read, it means that the reader and computer are communicating normally.
4. Click WiFi Configuration in the menu bar, or **Communication Parameter Settings - HTTP Parameter Configuration** to enter the following interface.



### Interface details:

Http config

Note: Reset the following parameters to take effect

Communication Type: Ethernet Port 0 Cancel

Port (Default 80): 9600 Reporting interval: 10 Unit(s)

Url Sample : https://www.baidu.com/search/error.html

URL

Read Set Finish

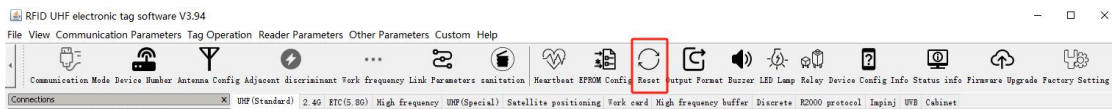
[ Communication Type ]: HTTP data is reported using this communication type.

【Port】: Server port.

[Report Interval]: Optional (0, 10, 20, 30...), the tag data read by the card reader during the interval will be packed together into a JSON data. For details, please refer to the HTTP example. 0 means canceling the HTTP function.

【URL】: Reporting interface address.

5. Close the parameter setting window, click **the reset button on the menu bar** or **other parameters - software reset** to enter the device reset interface.



Device reset

Set Finish